

# **PARTICIPATORY PLANNING, OUR COLLECTIVE RESPONSIBILITY**

**'TARKWA DESERVES BETTER**

1

# PRESENTATION OUTLINE

- **The role of the Physical Planning Department**
- **On going works of the Department**
- **The vision of the MCE and the Assembly**
- **The PPP approach-a call for support**
- **The Tarkwa Community Centre**
- **Conclusion**

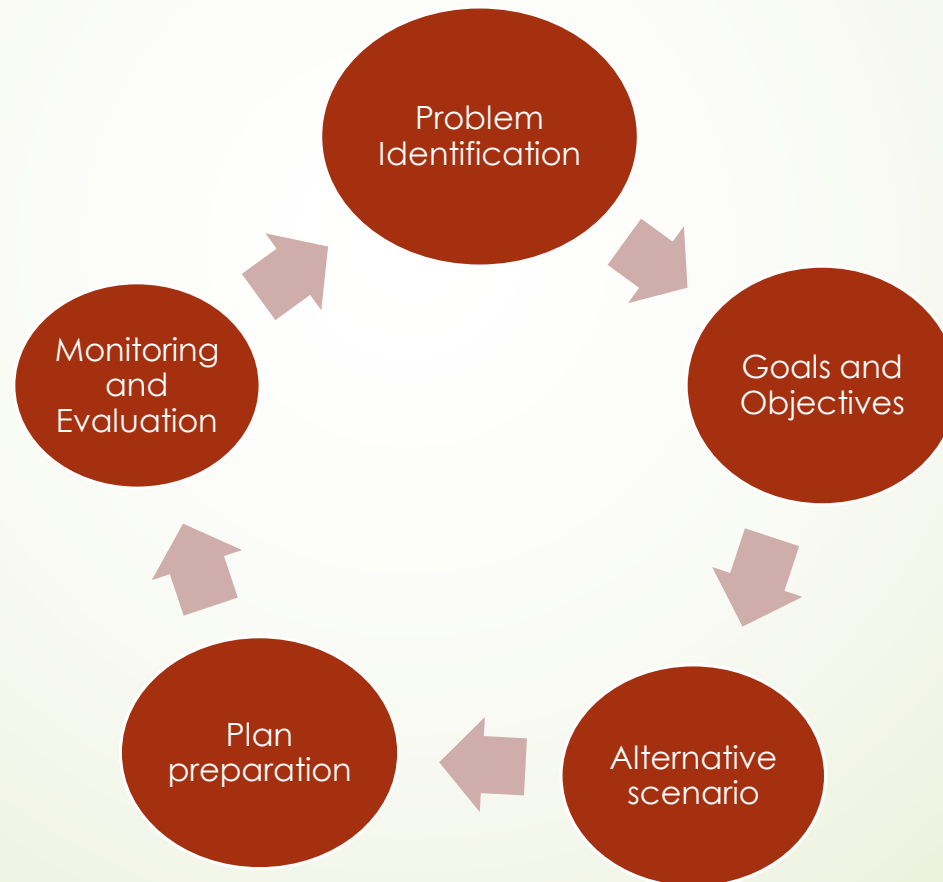
# THE ROLE OF THE PHYSICAL PLANNING DEPT

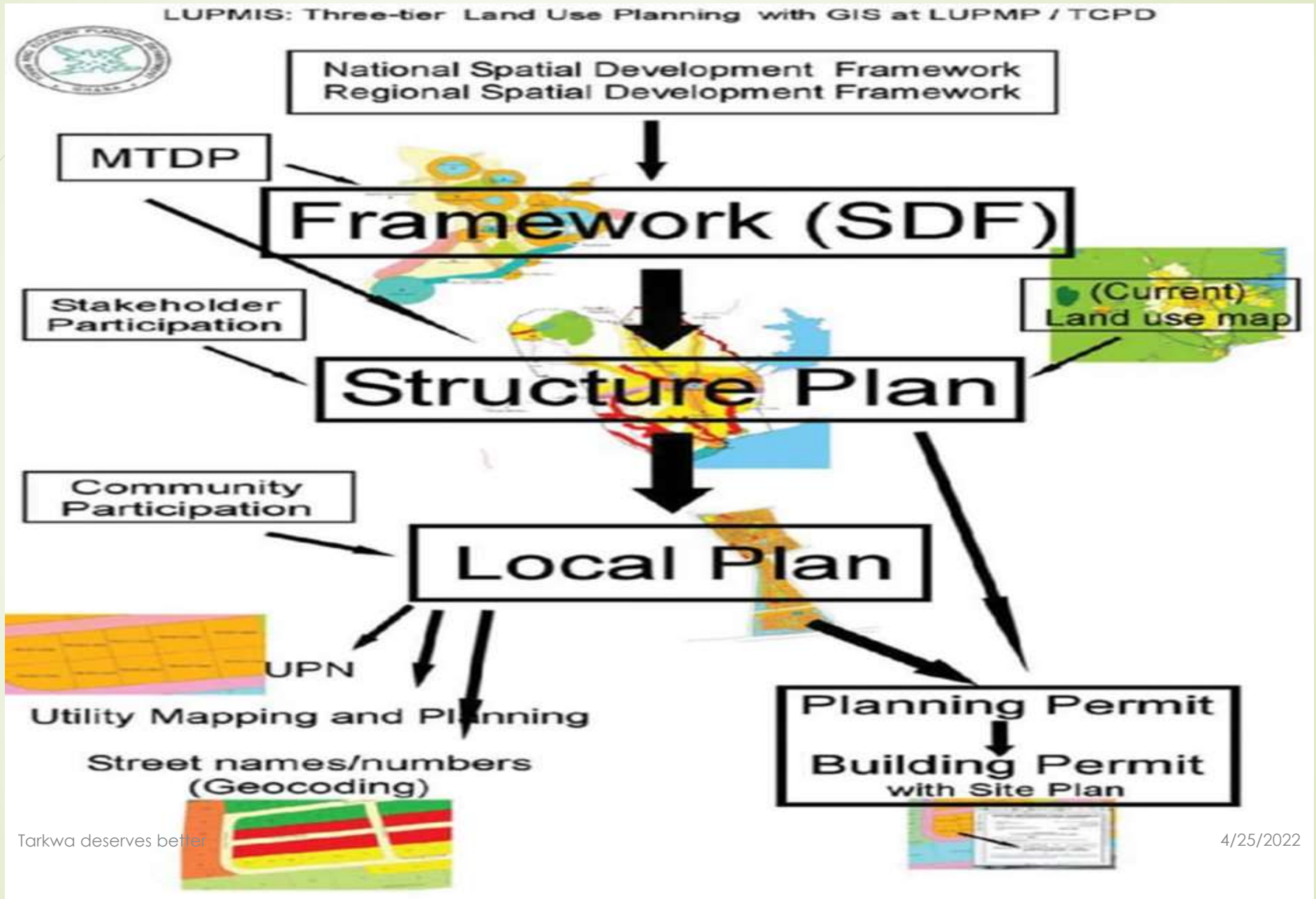
3

- **Collaborate with Nananom and stakeholders in the Spatial Planning of our towns and communities**
- **Ensure development control**
- **Facilitate the acquisition of lands for the municipal Assembly**
- **Ensure landscaping and horticulture works**
- **Street naming and property addressing**
- **Building/development permitting**
- **Advise the general public on land and building related issues**
- **Any other duties that may be assigned**

# How do we Plan?

The involvement of a community/stakeholders in the entire planning process







# DOMEABRA-NKWANTAKROM-ACHEAMPONGKROM RESETTLEMENT PLAN (DNA-RP)



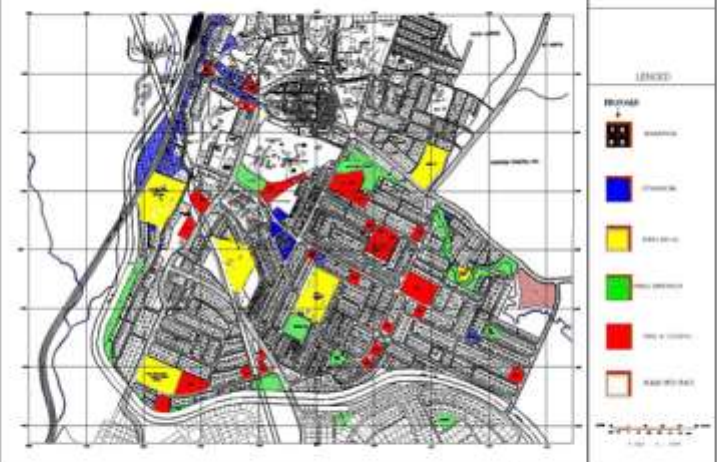
**LEGEND**  
PROPOSED LAND USE

- RESIDENTIAL
- EDUCATIONAL
- PUBLIC OPEN SPACE
- PUBLIC UTILITY/SANITARY AREA
- COMMERCIAL
- CIVIC & CULTURE
- PROPOSED ROAD

1 METRE  
1 KILOMETRE  
SCALE 1:2500

TARKWA - NKWANA MUNICIPAL ASSEMBLY  
PHYSICAL PLANNING DEPARTMENT  
DOMEABRA-NKWANTAKROM-ACHEAMPONGKROM  
RESETTLEMENT PLAN (DNA-RP)  
PLAN No. W/2018/PP/001/001

APPROVAL DATE	2018/04/04
DESIGNER	ADAMU ADAMU
APPROVER	ESTHER OBOYI
D.P.P.O	ADAMU ADAMU



**TARKWA - CENTRAL MAP SHOWING MAJOR CBD**

TARKWA - NKWANA MUNICIPAL ASSEMBLY	
TOWN & COUNTRY PLANNING DEPARTMENT	
DATE: 04.10.2018 / 04.10.2018 (001/001)	
DESIGNED BY	ADAMU ADAMU
APPROVED BY	ESTHER OBOYI
D.P.P.O	ADAMU ADAMU



Tarkwa deserves better

4/25/2022

# Property tagging in Tarkwa



# STREET NAMING AND PROPERTY ADDRESSING

- AERIAL IMAGES FOR a number of towns
- Digitization done for some selected communities
- Street names done for some communities
- Poles procured and mounted for some communities



# Vision of MCE

10

- A uniquely planned world class Assembly that provides effective and efficient services for her citizens through participation and partnership from major stakeholders.
- Redevelopment of key areas in Town
- Beautification drive
- Public private Partnerships
- Trade, commerce and industrialization



Tarkwa deserves better

# AREAS EARMARKED FOR REDEVELOPMENT

11



Tarkwa deserves better

- Assembly Block Complex-Ahwetieso
- Nsuta Junction
- 1106
- Cynide junction/metro mass area
- Nzema line area-
- Market Circle
- Tarkwa Na Aboso
- Nzemaline proper/old town
- Community center

12

# LANDSCAPING AND HORTICULTURE WORKS



13

# Landscaping design at Nsuta Junction



Current situation



Proposed design



Tarkwa deserves better

4/25/2022

**LOCATION**

# NZEMALINE STORES



Tarkwa deserves better

4/25/2022

# TRANSPORTATION-1106-LONG BUSES



# CYNIDE STORES



# THE TARKWA COMMUNITY CENTRE

- A modern community center design that blends recreation, pleasure, communal gathering, culture as well as historic artefact in one component.
- A community center which will be utilized by all age groups
- A center of knowledge and identity.

The components includes;

- An auditorium
- A swimming pool and restaurant
- A children playing ground
- A mineral and historic museum
- Conference facility
- Offices
- Rest rooms
- A durbar ground
- A fountain

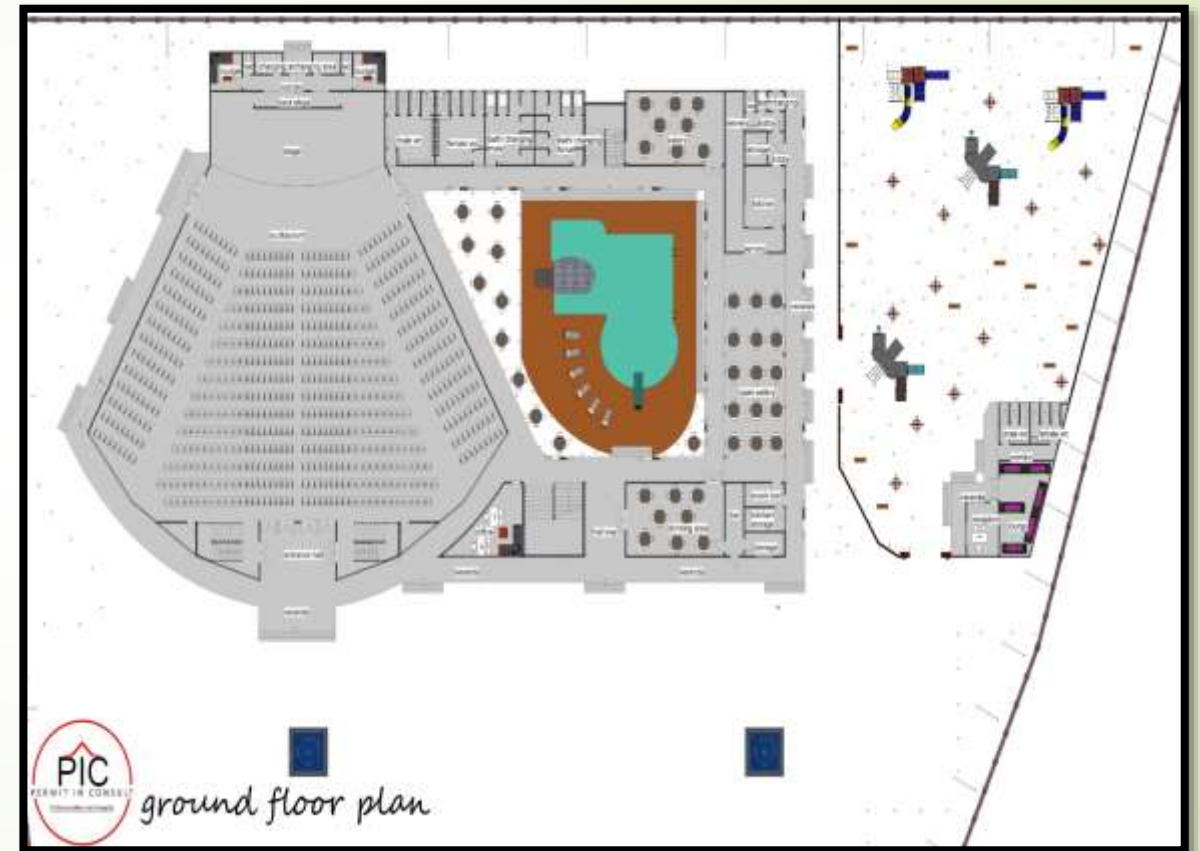
# LOCATION AND CURRENT STATE



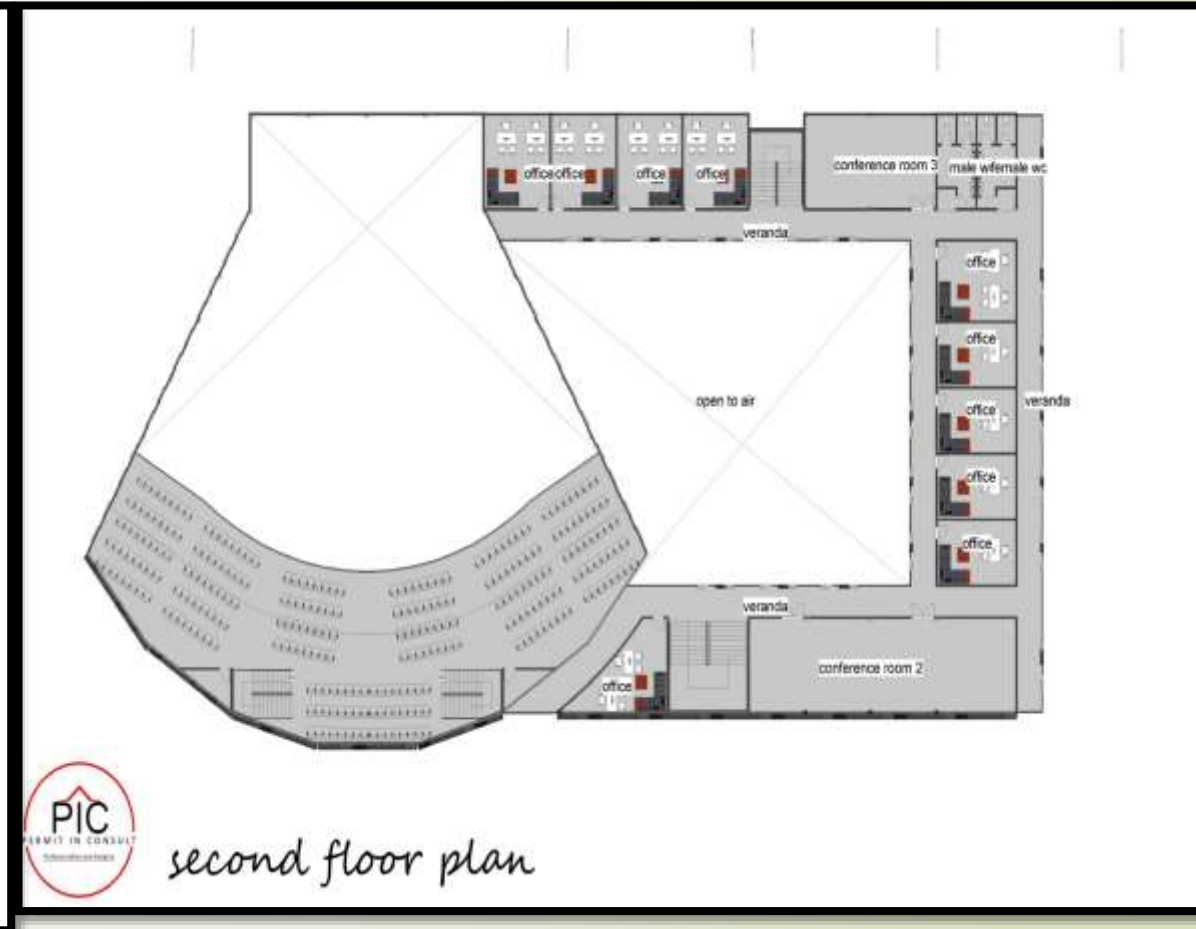
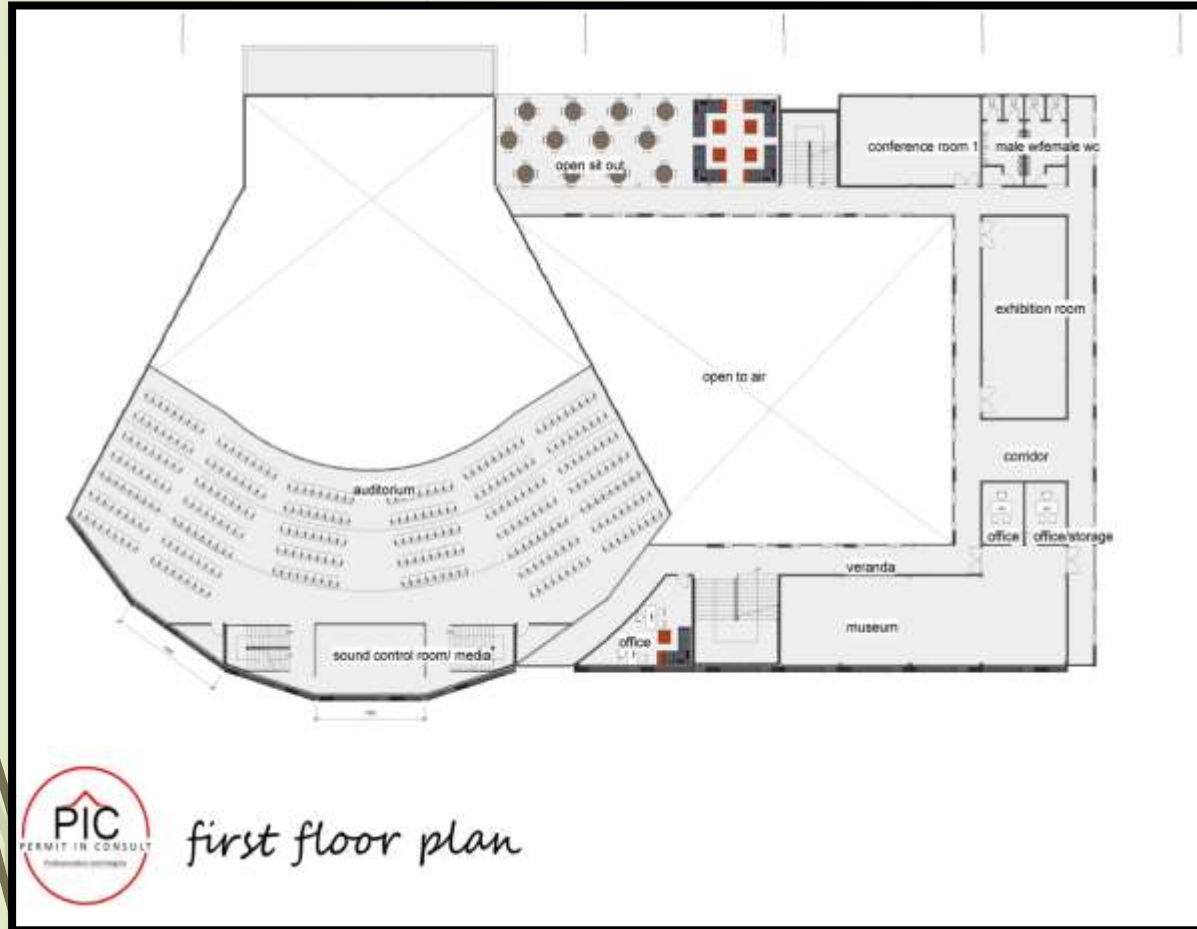
Tarkwa deserves better



# Community center designs



# 1<sup>st</sup> and 2<sup>nd</sup> floor plans





**Aerial view**





# Children Playing Ground



Tarkwa deserves better

4/25/2022



Tarkwa deserves better

# entrance



FRONT VIEW



Tarkwa deserves better



# WAY FORWARD

- Partnership
- Partnership
- Partnership

