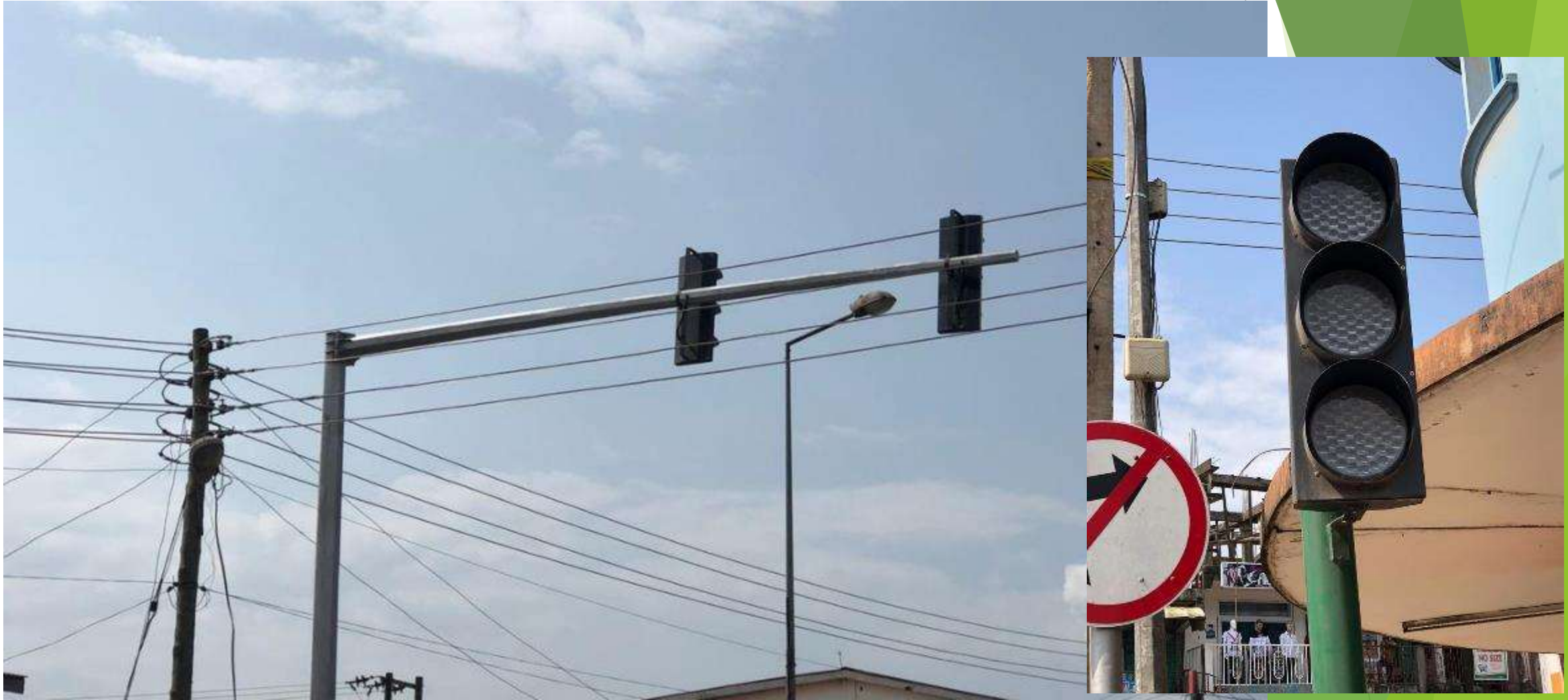


# Roads

It is our vision to improve road infrastructure and road access to all farming communities



# Completion of Traffic light- Tarkwa



# Completion of Layby- Tarkwa





# Construction of Culvert - Nyanso road





# Construction of Drains - UMaT - Brahabebom road



# Asphalt Overlay - Wassa Agona - Bogoso Junction (Road Fund)





# Construction of Bonsa - Benso Road (Road Fund)



# Construction of Culvert - Tamso New Road



BEFORE

AFTER





# Back filling- Tamso New Road



BEFORE

AFTER



# Grading works - Senyakrom, Brenuakyim



BEFORE

AFTER

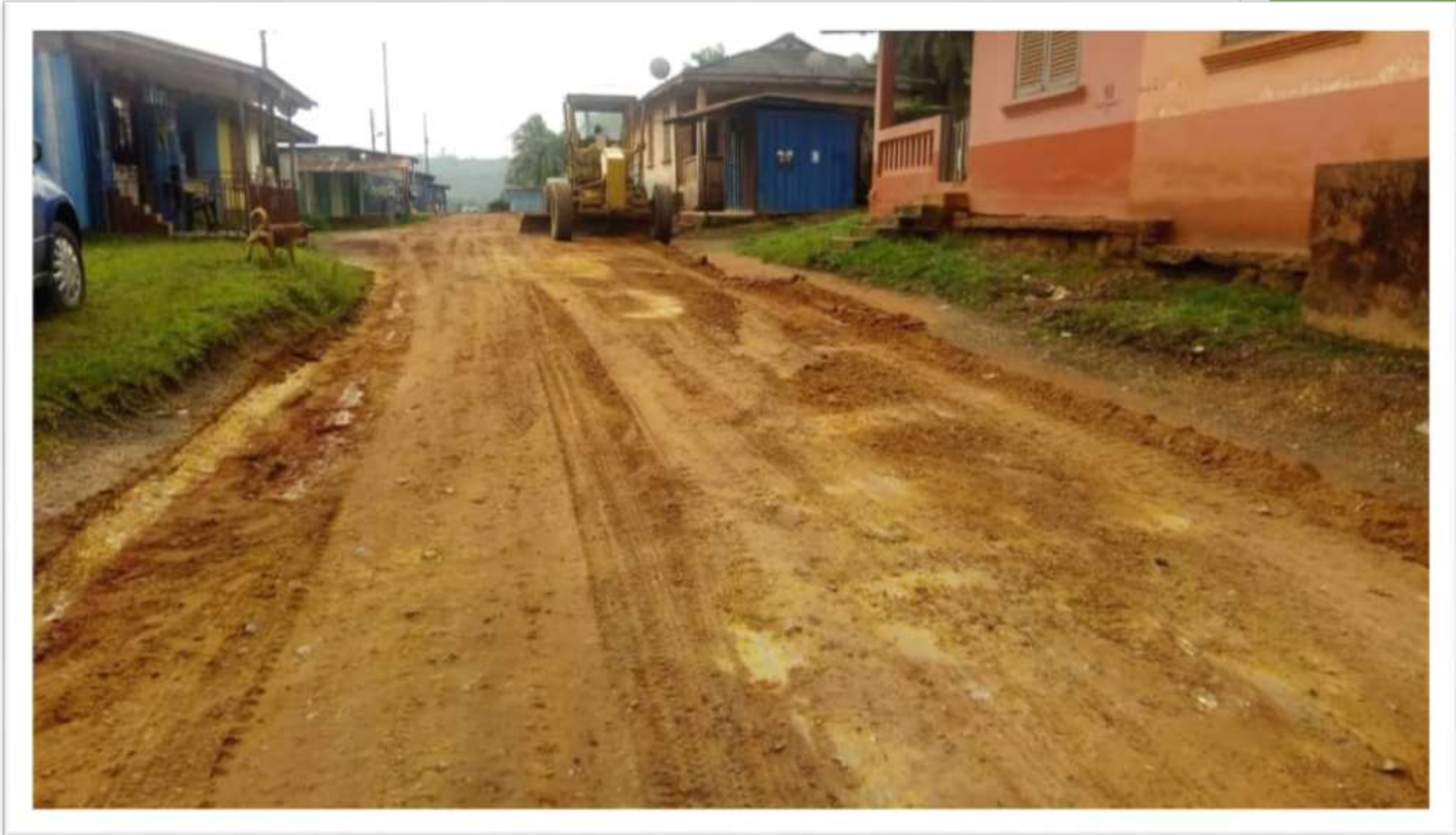




# Box Culvert - Bogrekrom



# Grading works - Cyanide area





# Grading works - Kwamenakrom area



# Grading works - Alimens Area





# Grading works - Traditional Council Road



# Grading works - Nyanso Road





# Grading works - Akyem area



# Grading works - Nsuaem - Top Road





# Other Contracts Awarded - 2020

Tarkwa Town roads - 40KM

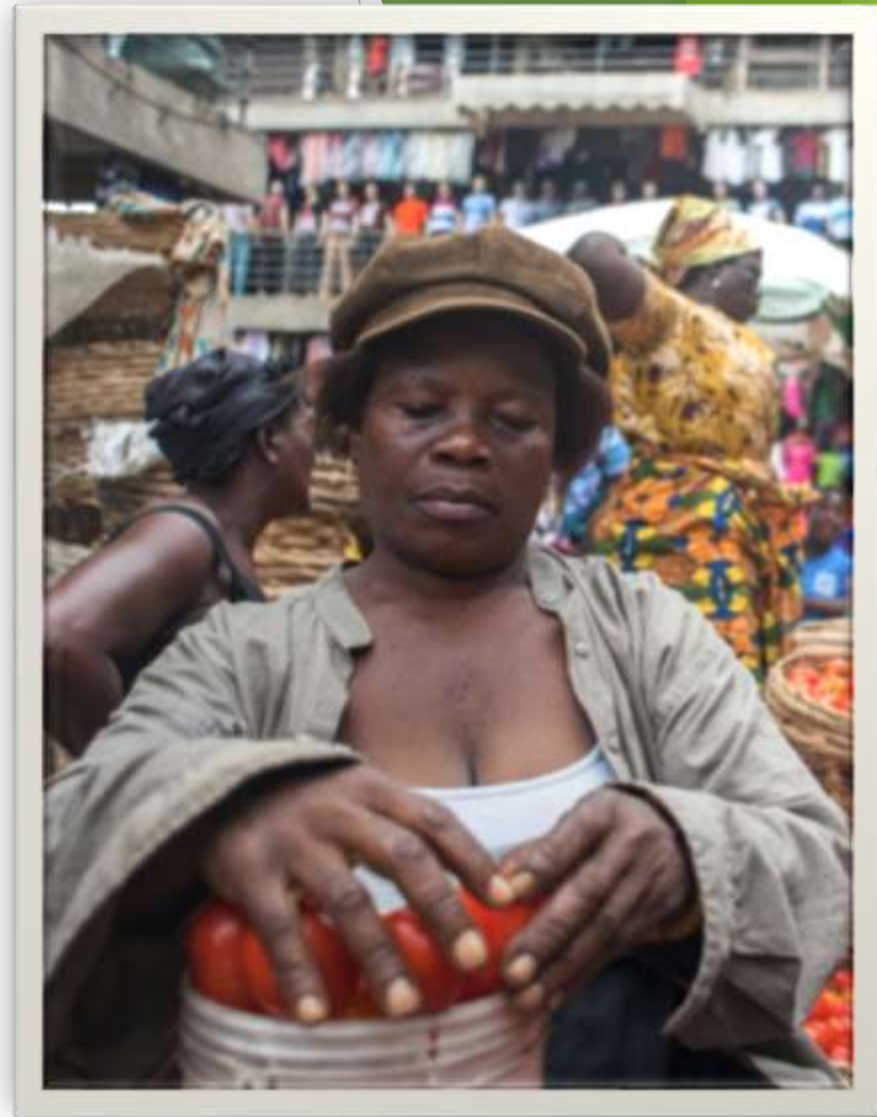
Nsuaem Town roads - 12km

Simpa Town Roads - 6km

Dompim Town Roads - 10km

# Economic Development

It is our vision to create an enabling  
environment for businesses to thrive





# Covid-19 Stimulus package

For small businesses in the  
municipality



# Completion of Business Resource Center





# Rehabilitation of Tamso Market



# Completion of Wood Village - Essamang Kakraba





# Installation of Transformer / energizing - wood village



# Fencing Tarkwa main station





# Paving works - Tarkwa Women's market



# Business Development Training





# Business Development Training



# Support to Persons with Disability





# Disaster Management

It is our vision to enhance disaster prevention and preparedness



# Summary of Activities - 2020

- ▶ **Public Education on flood - Municipal Wide**
- ▶ **Field Assessments - Municipal Wide**
- ▶ **Capacity Building of Staff**
- ▶ **Education on Covid-19 - Municipal Wide**
- ▶ **Distribution of Relief items**



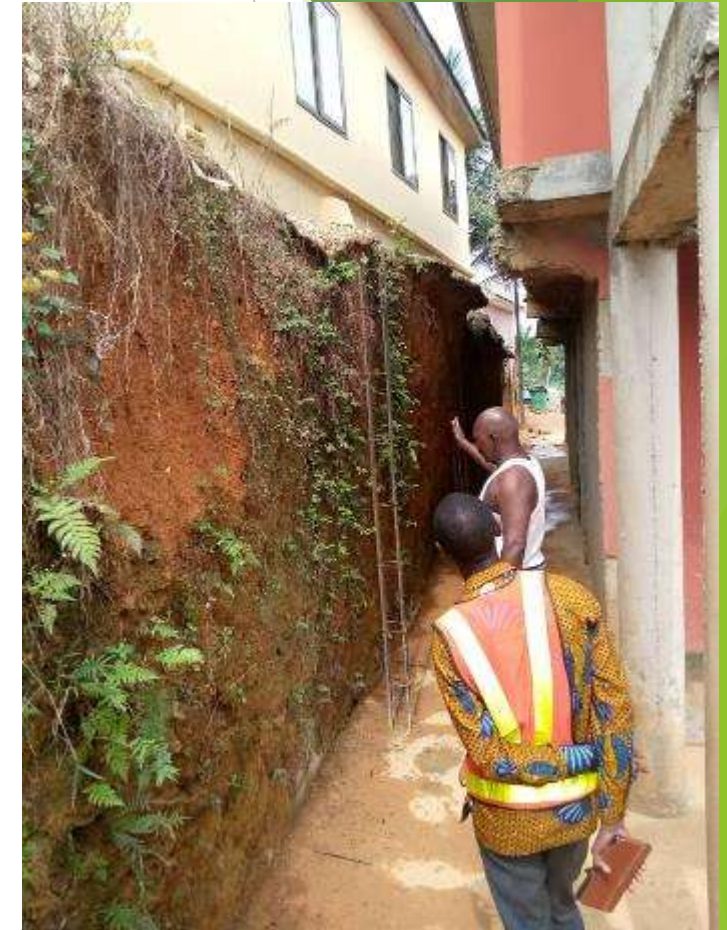
# Activities in Pictures



Donation of Relief Items



Public Education



Field Assessment

# Support for Victims of Fire Outbreak at Tarkwa Station and Nzemaline stores